

Boreas D90

Performance Evaluation



REVISION HISTORY

VERSION	DATE	CHANGES
1.0	18th Aug 2022	Initial Release
1.1	2nd Nov 2023	Added car dead reckoning results

Table 1. Revision history

TABLE OF CONTENTS

Revision History	2
Table of Contents	2
Introduction	3
Allan Variance	4
Method	4
Results	5
Overall	5
Individual Unit Test Results	6
Orientation Accuracy Test	7
Method	7
Results	9
Gyrocompassing Accuracy Test	11
Method	11
Results	12
Dead Reckoning - Car with Aiding	13
Method	13
Results	13

INTRODUCTION

Boreas D90 combines Digital Fibre Optic Gyroscope (DFOG) and closed-loop accelerometer technologies, with a dual antenna RTK GNSS receiver. These are coupled in a sophisticated fusion algorithm to deliver accurate and reliable position, navigation and timing (PNT).

This performance evaluation report is designed to demonstrate a range of datasheet specifications as well as additional metrics useful for comparing IMU and INS products. This report aims to help facilitate decision making in the suitability and performance of Boreas D90 for a wide range of applications.

It is expected that additional application centric and performance metrics will be included in this report over time. If it does not contain key information needed to facilitate your needs then please contact your account manager or support@advancednavigation.com for more information. Advanced Navigation also offers loan units, if needed, to help determine product performance and suitability.

ALLAN VARIANCE

The Allan Variance method is used to determine the Bias instability and Angular Random Walk (ARW) of the gyroscopes.

Bias Instability (sometimes referred to by others as Bias Stability, or In-run Bias Stability) is a comparative figure of merit for gyroscope drift. Lower numbers mean a lower error in orientation estimation when integrating the gyroscope output over time. It is often used to divide gyroscope performance into grades, for example; consumer, industrial, tactical, navigation or strategic. It is represented in the units of °/hr.

Angular Random Walk (ARW) is the angular error buildup with time due to white noise in the angular rate. It is represented in the units of °/√hr. It can also be represented as Noise Density, in the units of °/h/√Hz, by multiplying ARW by 60. More precisely, the conversation is as follows:

$$ARW (°/h) = \frac{1}{60} \cdot FFT (°/h/\sqrt{Hz})$$

Boreas D90 Published specification is:

- A gyroscope bias instability of < 0.001 °/hr
- A angular random walk (ARW) of <0.001 °/√hr

Method

In order to carry out an Allan Variance test, a Boreas unit is situated in a low noise/vibration environment with a relatively stable temperature. The unit is mounted in a stationary fashion. For the range of units tested below, these were situated in either an office environment overnight or in our dedicated calibration chamber. These environments are suitable to prove the performance of the units, however are imperfect, whereby artefacts can be seen on the Allan Variance plot. Tests are run for a duration of 5-12+ hours in order to collect sufficient data.



PERFORMANCE GRADE

Consumer/Hobby
Industrial & Tactical
High-end Tactical
Navigation
Strategic



BIAS STABILITY

> 30 °/h
1 – 30 °/h
0.1 – 1 °/h
0.01 – 0.1 °/h
0.0001 – 0.01 °/h

Results

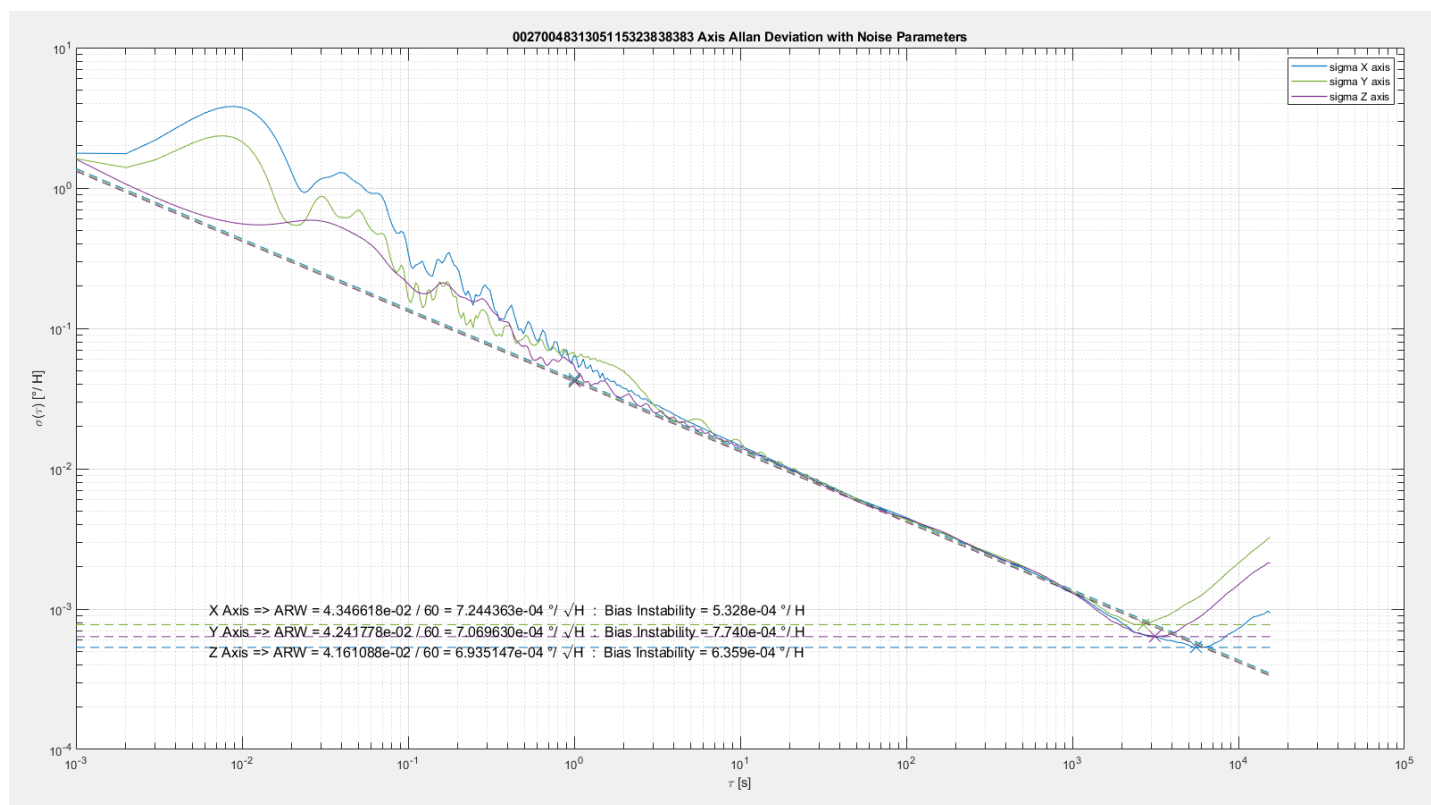
Overall

The average result across all axes of all units tested is:

- Gyro Bias Instability = 0.000574 °/hr (or 5.74×10^{-4})
- Angular Random Walk (ARW) = 0.000456 °/√hr (or 4.56×10^{-4})

For both bias instability and angular random walk, all Boreas D90 units exceeded the specification, and on average by a factor of 2x

The image below is representative of the Allan Variance test result of a Boreas D90 unit.



Allan Variance of unit 002700483130511532383838

Individual Unit Test Results

#	Unit Serial Number	Hardware version	Gyro Bias Instability (°/hr) (x/y/z axis)	Angular Random Walk (°/√hr) (x/y/z axis)
1	0019003A3130511532383838	v1.0	0.000643 0.000631 0.000554	0.000739 0.000732 0.000737
2	004D00363130511532383838	v1.0	0.000896 0.000929 0.000826	0.000784 0.000776 0.000769
3	001700313130511532383838	v1.0	0.000859 0.000501 0.000223	0.000752 0.000745 0.000710
4	002700483130511532383838	v1.0	0.000457 0.000372 0.000567	0.000364 0.000379 0.000318
5	0048003E3130511832303437	v1.0	0.000690 0.000830 0.000591	0.000334 0.000372 0.000329
6	0048003B3130511832303437	v1.0	0.000678 0.000759 0.000726	0.000344 0.000357 0.000331
7	004700313130511832303437	v1.0	0.000397 0.000599 0.000512	0.000356 0.000400 0.000358
8	0048002D3130511832303437	v1.0	0.000468 0.000477 0.000605	0.000332 0.000386 0.000320
9	004800353130511832303437	v1.0	0.000875 0.000535 0.000894	0.000330 0.000320 0.000311
10	004700413130511832303437	v1.0	0.000423 0.000381 0.000259	0.000319 0.000349 0.000325
11	001A00273130511532383838	v1.0	0.000482 0.000380 0.000349	0.000386 0.000356 0.000347

#	Unit Serial Number	Hardware version	Gyro Bias Instability (°/hr) (x/y/z axis)	Angular Random Walk (°/√hr) (x/y/z axis)
12	004700453130511532383838	v1.0	0.000456 0.000657 0.000536	0.000405 0.000364 0.000362
13	005000343430511231393937	v1.1	0.000514 0.000513 0.000599	0.000465 0.000508 0.000467
14	002900463038511539313734	v1.1	0.000548 0.000542 0.000389	0.000582 0.000507 0.000441

ORIENTATION ACCURACY TEST

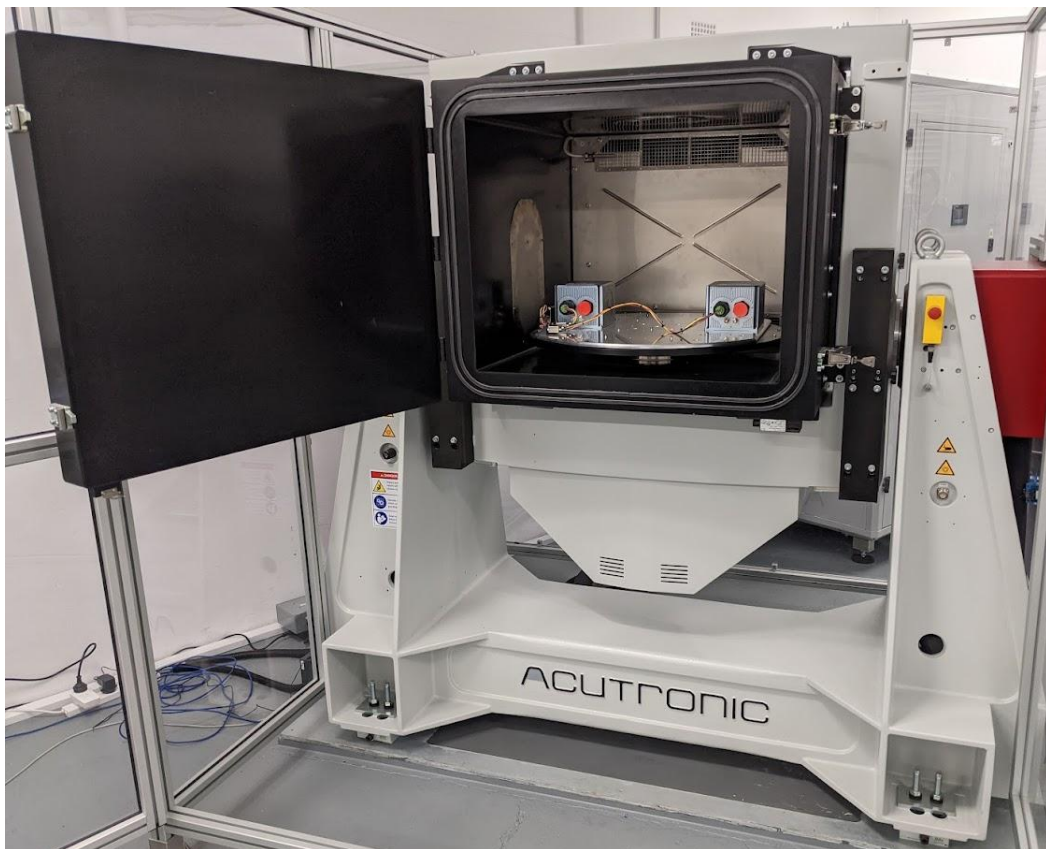
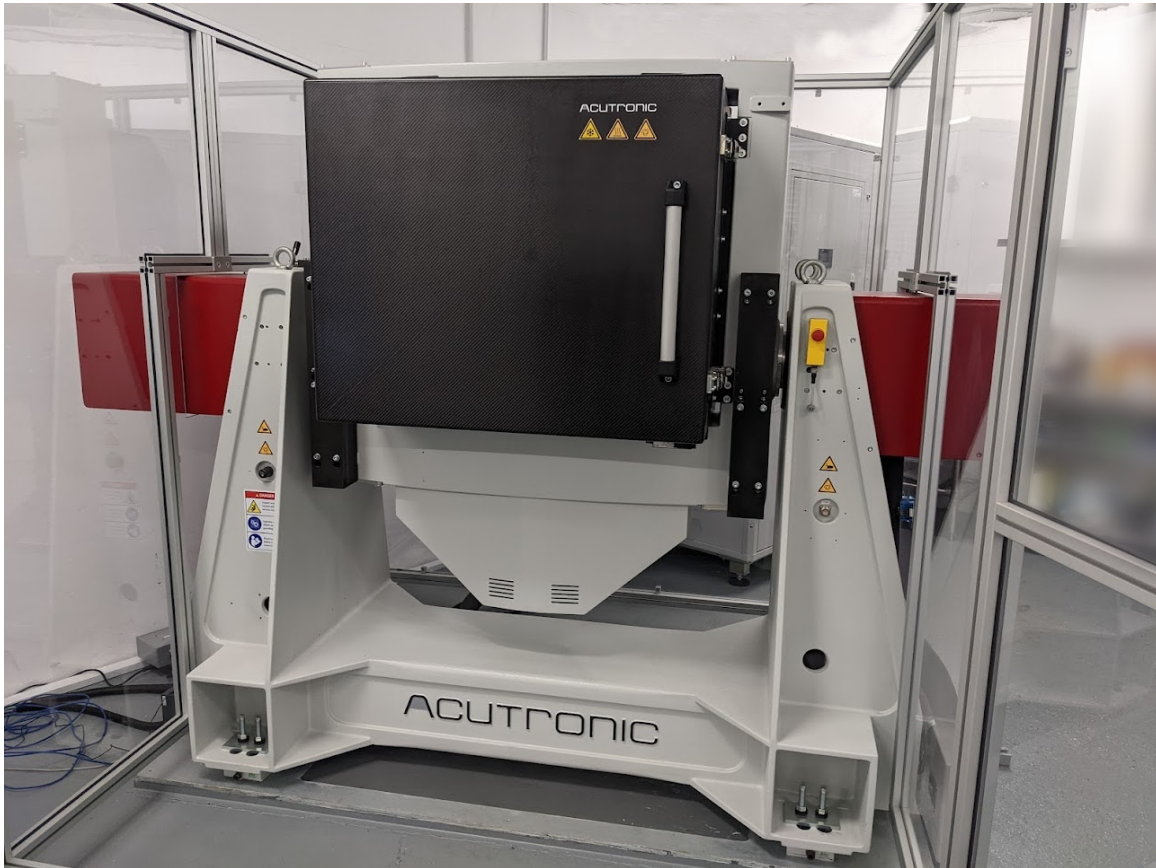
The orientation accuracy test evaluates the absolute roll and pitch accuracy of Boreas D90.

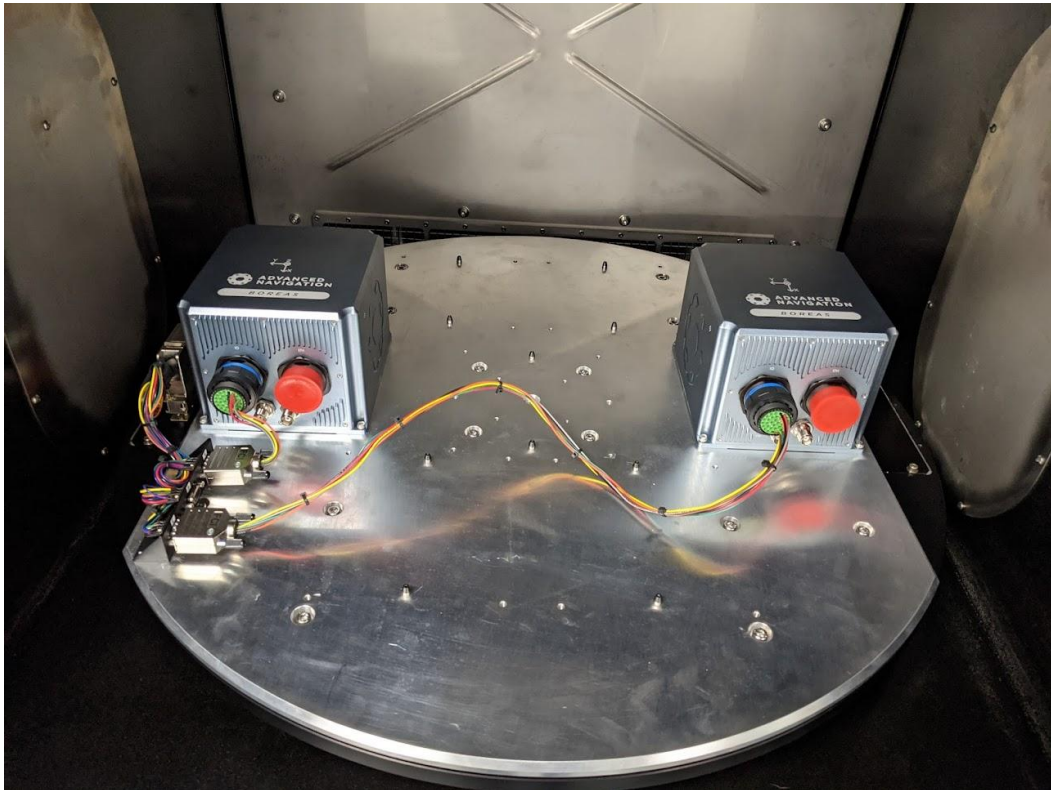
Boreas D90 Published specification is:

- A pitch accuracy of 0.005 degrees RMS
- A roll accuracy of 0.005 degrees RMS

Method

This orientation accuracy test was performed in an Acutronics iMPULSE GL2 in Sydney, Australia. This system allows orientation positioning accuracy to < 1 arc sec (0.00028 degrees). Two Boreas D90 units were rotated through all 3 axes and the orientation output error was measured against the Acutronic system.



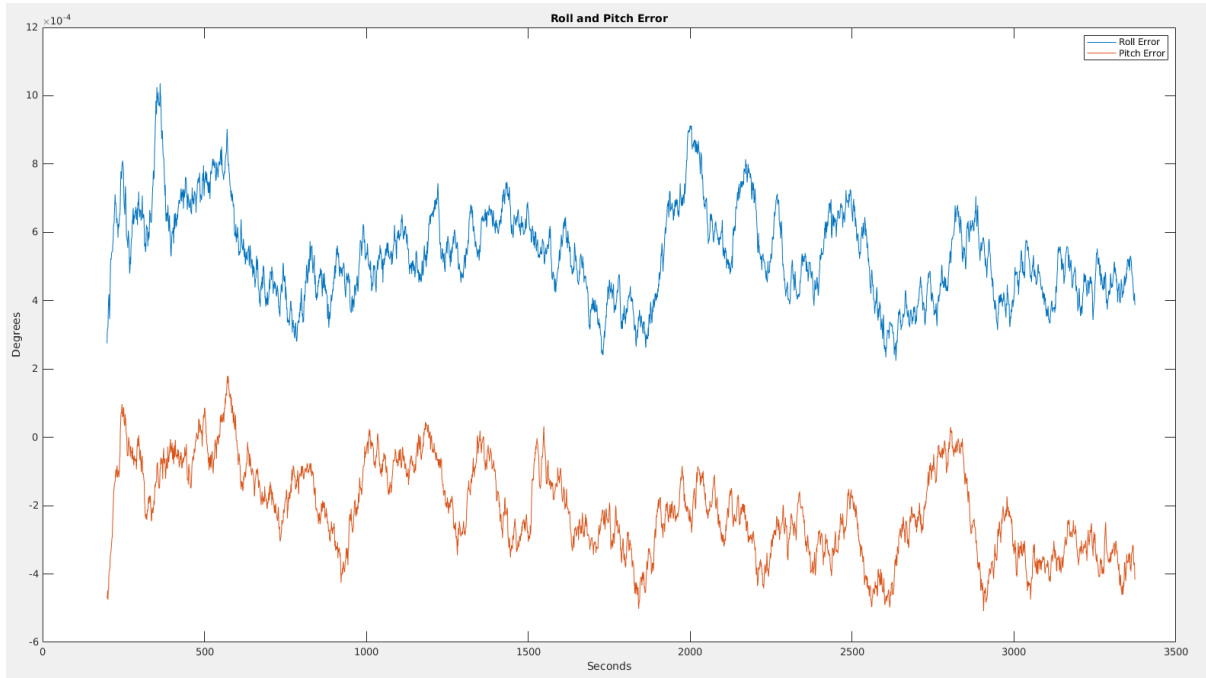


First a room temperature test was conducted, rotating the units through various orientations and measuring the INS filter orientation error against the Acutronic reference angles.

The second test carried out was a repeat of the first test but while the unit was cycled in temperature from -40C to 60C.

Results

The resultant figure below shows the difference between the Acutronic reference orientation and the Boreas D90 reported orientation.



The resultant normalised roll and pitch accuracy over the ~60 min duration of testing is:

- Roll = 0.00014 degrees RMS
- Pitch = 0.00013 degrees RMS

The resultant roll and pitch is an order of magnitude better than the published specification

GYROCOMPASSING ACCURACY TEST

Boreas D90 features fully automatic gyrocompassing capability, without the need for user intervention. Gyrocompass coarse alignment initialises as soon as the unit is powered up at a known latitude. Coarse alignment completes in 2 minutes under a range of stationary and low to moderate dynamic motion environments. Neither GNSS position nor heading is required for this operation to complete.

Once coarse alignment is complete, fine alignment commences and runs continuously during the operation of the unit.

Boreas D90 Published specification is:

- A gyrocompass heading accuracy of 0.01 degrees secant latitude RMS

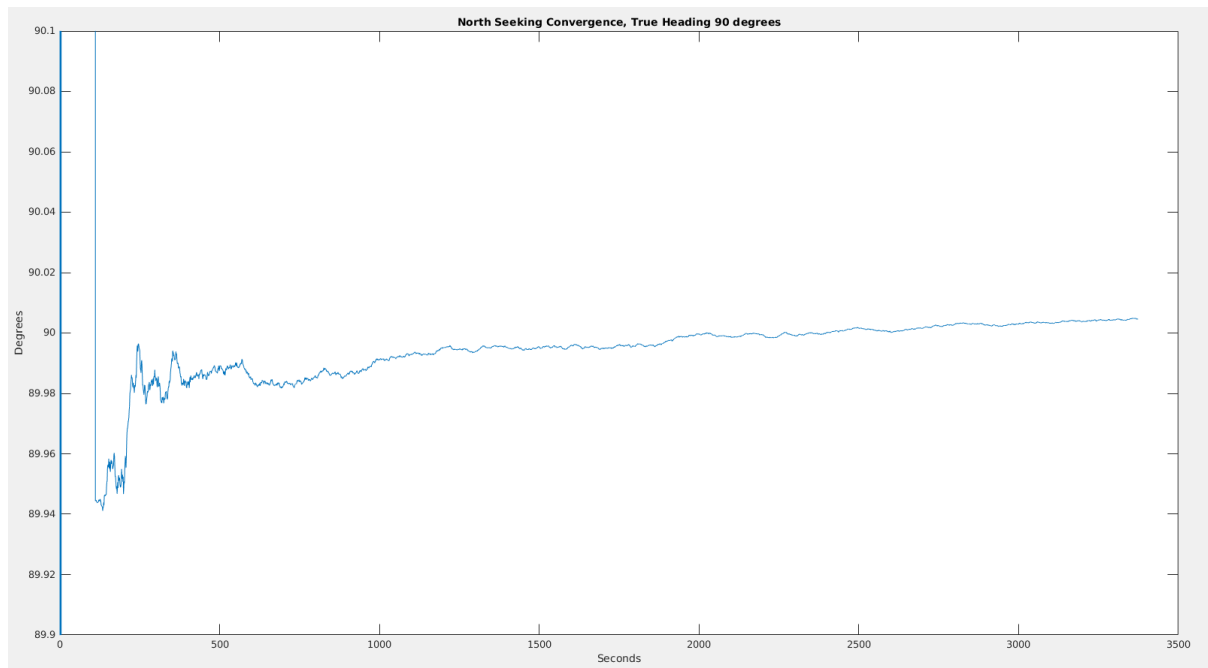
This gyrocompass heading accuracy equates to the equivalent absolute heading accuracy at defined latitudes as:

- 0.01° at 0° latitude (the equator)
- 0.012° at ±33° latitude (latitude of unit under test)
- 0.014° at ±45° latitude
- 0.020° at ±60° latitude
- 0.029° at ±70° latitude
- 0.058° at ±80° latitude

Method

A Boreas D90 unit was situated in the Acutronic chamber as detailed in the Orientation test described above. The unit was orientated to a known azimuth of 90 degrees. The unit was powered up from a cold start, initialised with a latitude of -33.911 degrees, and operated for 60 minutes.

Results



For the first 2 minutes, the unit is completing coarse alignment, for which no known good heading value is defined. After 2 minutes the unit completed coarse alignment and reported a heading of 89.94 degrees (-0.06 degrees from actual). Fine alignment is then in continuous operation.

Small fluctuations are observed whilst the filter resolves gyroscope biases. The system reached full accuracy within 6 minutes. As can be observed, the unit then maintained a heading accuracy better than specification for a period of 1 hour at which point the test was completed.

DEAD RECKONING - CAR WITH AIDING

Boreas D90 is a complete GNSS/INS, with exceptional GNSS denied navigation. When aided with an external velocity source, Boreas D90 can achieve long term dead reckoning performance of 0.01% of distance travelled.

Method

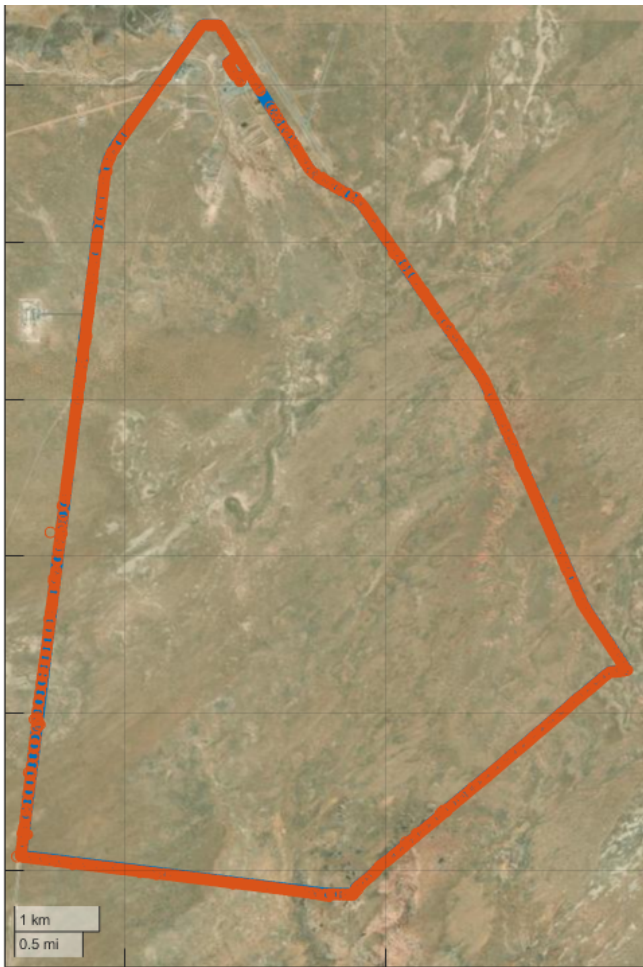
Boreas D90 was installed in a passenger car and fitted with a high accuracy wheel encoder.

The test was to drive the car along a sealed secondary road and compare position data between the GNSS reference and the Boreas D90 DFOG INS at the end of the journey.



Results

A 28 km drive on a mix of sealed/unsealed roads was completed over a 47 minute duration. At the completion of the drive, an error of 4.72 m is measured from the Boreas D90 state output versus the GNSS position, representing an error of 0.017% of distance travelled.



© ADVANCED NAVIGATION

Information in this document is provided solely in connection with Advanced Navigation products. Advanced Navigation reserves the right to make changes, corrections, modifications or improvements, to this document, and the products and services described herein at any time, without notice.

All Advanced Navigation products are sold pursuant to Advanced Navigation's terms and conditions of sale.

Purchasers are solely responsible for the choice, selection and use of the Advanced Navigation products and services described herein, and to the extent permitted by law, Advanced Navigation assumes no liability whatsoever relating to, or in anyway connected to, the choice, selection or use of the Advanced Navigation products and services described herein.

No license, express or implied, by estoppel or otherwise, to any intellectual property rights is granted under this document. If any part of this document refers to any third party products or services it shall not be deemed a license grant by Advanced Navigation for the use of such third party products or services, or any intellectual property contained therein or considered as a warranty covering the use in any manner whatsoever of such third party products or services or any intellectual property contained therein.

UNLESS OTHERWISE SET FORTH IN ADVANCED NAVIGATION'S TERMS AND CONDITIONS OF SALE ADVANCED NAVIGATION DISCLAIMS ANY EXPRESS OR IMPLIED WARRANTY WITH RESPECT TO THE USE AND/OR SALE OF ADVANCED NAVIGATION PRODUCTS INCLUDING WITHOUT LIMITATION IMPLIED WARRANTIES OF MERCHANTABILITY, FITNESS FOR A PARTICULAR PURPOSE (AND THEIR EQUIVALENTS UNDER THE LAWS OF ANY JURISDICTION), FAULT TOLERANCE OR INFRINGEMENT OF ANY PATENT, COPYRIGHT OR OTHER INTELLECTUAL PROPERTY RIGHT.

UNLESS EXPRESSLY APPROVED IN WRITING BY TWO AUTHORIZED ADVANCED NAVIGATION REPRESENTATIVES, ADVANCED NAVIGATION PRODUCTS ARE NOT RECOMMENDED, AUTHORIZED OR WARRANTED FOR USE IN MILITARY, AIR CRAFT, SPACE, LIFE SAVING, OR LIFE SUSTAINING APPLICATIONS OR HAZARDOUS OR HIGH RISK ENVIRONMENTS REQUIRING FAIL-SAFE OR FAULT TOLERANT PERFORMANCE, NOR IN PRODUCTS OR SYSTEMS WHERE FAILURE OR MALFUNCTION MAY RESULT IN PERSONAL INJURY, DEATH, OR SEVERE PROPERTY OR ENVIRONMENTAL DAMAGE. SUCH USE IS AT PURCHASERS OWN RISK, EVEN IF ADVANCED NAVIGATION KNOWS OF SUCH USE.

ADVANCED NAVIGATION PRODUCTS WHICH ARE NOT SPECIFIED AS "AUTOMOTIVE GRADE" MAY ONLY BE USED IN AUTOMOTIVE APPLICATIONS AT USER'S OWN RISK.

Resale of Advanced Navigation products with provisions different from the statements and/or technical features set forth in this document shall immediately void any warranty granted by Advanced Navigation for the Advanced Navigation product or service described herein and shall not create or extend in any manner whatsoever, any liability of Advanced Navigation.

Information in this document supersedes and replaces all information previously supplied. References to Advanced Navigation in this disclaimer includes its related bodies corporate.

© 2023 Advanced Navigation - All rights reserved.